



the **play inspection** company

Annual Inspection

Winchester City Council

West Meon Village Hall RG (West Meon PC)

Headon View, West Meon, Hampshire, GU32 1LH



API Associate



Unit 5, Glenmore Business Park, Blackhill Road, Poole, Dorset, BH16 6NL
t- 01202 590675 e- info@playinspections.co.uk

[www. playinspections .co.uk](http://www.playinspections.co.uk)

RPII Inspection Methodology

This document outlines the RPII position on inspections undertaken by the Inspectors listed on the RPII Register of Inspectors for Indoor Annual, Outdoor Annual, Outdoor Operational and Outdoor Routine.

Inspections are undertaken with reference to the standards listed in this preamble only; where no date for the standard is given it the date of the standard will be that current at the time of inspection with the exception of where overlap periods are granted by the standards committee when standards are updated. The information contained in reports is provided to assist the owner/operator in fulfilling their responsibilities as detailed in the relevant standard. Other standards referenced within the listed standards do not form part of the inspection.

The following standards are relevant to all installations of equipment that are publicly accessible to users; this would include public parks, pay and play parks, schools, nurseries, public houses, holiday parks, indoor play centres, farm parks etc. All equipment used or employed in publicly accessible areas should meet with the requirements of the relevant standards (listed below);

BS EN 1176 Parts 1, 2, 3, 4, 5, 6, 10 & 11 Playground equipment intended for permanent installation outdoors & indoors.

BS EN 1176 Part 7 - 'Guidance on Installation, Inspection, Maintenance and Operation' (this document gives guidance to the owners/operators of the facility on the installation, inspection, maintenance and operation of playground equipment, including ancillary items).

Domestic play equipment falls outside of the scope of BS EN 1176 and has its own standard (BS EN 71 – Safety of Toys). Where domestic equipment can be identified this will be acknowledged in the report but any comments concerning compliance within the inspection will still refer to BS EN 1176.

Other equipment that is not clearly identified as unsupervised or domestic (natural play, self-build equipment etc.) will be assessed for compliance with the relevant standard listed below:

BS EN 15312 - Free access multi-sports equipment

BS EN 14974 - Skateparks

BS EN 16630 - Permanently installed outdoor fitness equipment

BS EN 16899 - Parkour equipment (plus RPII/API guidance notes)

Annual and Post Installation inspections will take into consideration compliance with current standards and defects related to wear and vandalism. Items not listed in the report have not been included in the inspection. The inspection will cover the playground equipment and the active area up to 3.0 metres around, or the fence line if closer.

Operational inspections only take into consideration defects related to wear and vandalism. Routine visual inspections (if undertaken) relate only to the most obvious defects such as broken or missing parts, vandalism and issues created by severe weather conditions (the intention is to identify hazards created by storm damage).

The inspection is non-dismantling, non-destructive and does not include for any structural, toxicology or impact assessments defined in the standard; however, the inspector will undertake a manual test for stability and if equipment fails under manual load, or any other hazard is identified as an unacceptable risk, the owner/operator will be notified as soon as practicably possible.

The inspector will access all standing surfaces as necessary on the equipment and assess all parts up to 2.5m above the standing surface. Where it is not possible to access parts of the equipment without employing an alternative means of access the report will record the action required by the owner/operator to ensure the continued safe use of the equipment. Ancillary equipment will be assessed using the inspector's knowledge and experience of the standards named in this document to ensure as far as is reasonably practicable the continued safe use of the items concerned. The owner/operator is responsible for the overall safety of the equipment and area. Inspectors who are trained to use ladders may use them where it is safe to do so, but if members of the public are present on-site ladders may not be used to access the equipment.

The inspector will not undertake any of the following works unless specifically agreed in writing at the time of order:

Checking the depth and underlying structural integrity of any surface areas and/or carrying out any testing of impact absorbing properties of any surfaces. The identification of any corrosion, rot or other deterioration in any apparatus or equipment other than by an external inspection or the inspection of any equipment (or part thereof) that is underground. Tightening any bolts, hinges or other fixing devices on any apparatus or equipment. Assessing or inspecting any electrical installations contained on any site and/or apparatus and/or equipment. Assessing or inspecting any water supplies and/or water features and/or any associated computerised systems (including carrying out any programming).

Where planting or trees are mentioned in the report no aboricultural or horticultural assessments of toxicity, suitability or condition are undertaken; the owner/operator should have suitable inspections provided by a competent person.

The owner/operator should have a 'design risk assessment' provided by the manufacturer/designer of the area for the equipment and location in which the facility is installed.

The operator is responsible for managing risks of their provision and is required by law to carry out a 'suitable and sufficient assessment' of the risks associated with a site or activity and this inspection shall be considered as contributing to the operator's discharge of this responsibility.

The details contained within the report are a snapshot of the condition at the time of inspection only and subsequent events may affect the condition of the facility. Suggested remedial actions are based on the knowledge and experience of the inspector and/ or that of the inspection company. The owner/operator should seek the advice of the manufacturer or a competent person at all times when undertaking repairs and/or modifications to equipment.

A full copy of the Play Inspection Company Ltd. Terms & Conditions is available on our website (www.playinspections.co.uk)

Table 1

The operator is responsible for following the guidance of the relevant standards. The standards give guidance on the installation, inspection, maintenance and operation of the various types of facilities. The inspection guidance is listed in Table 1, with an indication of which parts will be included in an RPII Annual or Post-Installation Inspection. The relevant standards also contain additional parts which the operator should follow.

Inspection recommendations of relevant standards Refer to relevant standards for full text	Annual Main	RPII Annual Outdoor/ Fully enclosed Inspection
6.1 d) Overall levels of safety of equipment (see note 1)	✓	✓ [1]
6.1 d) Overall levels of safety of foundations (see note 1)	✓	✓ [1]
6.1 d) Overall levels of safety of playing surfaces (see note 2)	✓	✓ [2]
6.1 d) Compliance with the relevant parts of the standard and or risk assessment (see note 3)	✓	✓ [3]
6.1 d) Effects of weather	✓	✓
6.1 d) Presence of rot, decay or corrosion (see note 1)	✓	✓ [1]
6.1 d) Assessment of repairs made or added or replaced components (see note 4)	✓	✓ [4]
6.1 d) Excavation or dismantling/additional measures	✓	✗
6.2.1 Assessment of glass reinforced plastics (see note 5)	✓	✓ [5]
6.2.1 Inspection of one post equipment (see note 1)	✓	✓ [1]
6.2.4 Undertaking the Operators inspection protocol	✓	✗

NB: The clause numbers in table 1 are taken from BS EN 1176 - Part 7:2020. The content is equally applicable to all other relevant standards listed herein. Playgrounds contain a range of equipment from different manufacturers and installed over a number of years; operators should implement any guidance provided by the manufacturer. Item specific detail is not readily available to RPII Playground Inspectors, whose report contributes to the operator's overall Annual Main Inspection as detailed in the relevant standards.

[1] A manual test only is undertaken for stability. Wear and instability are only detectable where readily apparent without dismantling or destruction and without the use of tools, excavation or specialist equipment. Rot and corrosion are tested or with a hammer and/or steel rod. Decay in timber may exist which can only be found with specialist equipment.


[2] Only the visible condition and dimensional compliance of surface extent is considered. Neither testing of impact attenuating properties nor measurement of the thickness of bound surfaces are undertaken on RPII annual inspections.

[3] The inspection assesses compliance where this can be tested on site using manual methods without dismantling, destruction and without the use of tools or specialist equipment.

[4] The operator should use manufacturer's recommended parts, or equivalent. We are unable to verify if such parts have been used, and any subsequent change in quality or performance

[5] Visible glass fibres will be noted in reports. The operator is responsible for repairs or replacement.

Risk Assessment Matrix

			Scores in the report are multiplication factors of Likelihood x Severity					
			Severity>>					
Likelihood	Very High probability, if the situation is not addressed an accident is almost certain.	5	Very High	VL (5)	L (10)	M (15)	H (20)	VH (25)
	High probability an accident is probable without any added factor.	4	High	VL (4)	L (8)	M (12)	H (16)	H (20)
	Moderate probability an incident is foreseeable.	3	Moderate	VL (3)	L (6)	L (9)	M (12)	M (15)
	Some probability, requires a combination of factors to take place.	2	Low	VL (2)	VL (4)	L (6)	L (8)	L (10)
	No significant probability; lightning strike, freak accident.	1	Very Low	VL (1)	VL (2)	VL (3)	VL (4)	VL (5)
			Very Low	Low	Moderate	High	Very High	
			1	2	3	4	5	
			No injury likely e.g. damaged or soiled clothing, minor bruising, grazes	Minor injury, laceration or bruising requiring first aid only	Injury requiring medical intervention e.g. cuts requiring stitches	Serious injury including concussions or fracture of long bones	Severe injury involving a potential life changing injury or fatality	
			Severity>>					
<p>Note 1: The total risk scores included within our reports are a multiplication factor of the calculated Likelihood and Severity of each finding. Both Likelihood and Severity are given a number between 1 - 5 as shown on the matrix above and these two numbers are then multiplied together to give the total risk score that is shown against defects on the report. Total risk scores can be divided in both directions, i.e. a total risk score of 12 could be a Likelihood (3) x Severity (4) or Likelihood (4) x Severity (3).</p> <p>Note 2: When we inspect we only see a snapshot of the current condition of the equipment. It is the operators responsibility to ensure that there is a continuing level of maintenance to keep the equipment in good working order and the site fit for use.</p>								

Equipment has been assessed to the following standards where relevant:

- BS EN 1176 Parts 1-11 (Playground equipment and surfacing)
- BS EN 14974 (Facilities for users of roller sports equipment)
- BS EN 15312 (Free access multi-sports equipment)
- BS EN 16899 (Parkour Equipment)
- BS EN 16630 (Outdoor Fitness Equipment).



West Meon Village Hall RG (West Meon PC)

Inspection Ref: 1300376

Site Ref: 33769

Inspected: 26-February-2021 - 10:06 by Daryl Cormack

Risk Assessment: 12 Moderate Risk



Location:

The site is partially overlooked by properties in the local community

Disabled Access:

Generally accessible; an area accessible to most.



i 8 - Low Risk

Item: Site General
Manufacturer: Owner/Operator
Surface Type: N/A
Item Quantity: 1
Equipment Compliance: N/A
Surface Area Compliance: N/A

Total Findings: 5



Finding 1

The site is accessible to the public during the COVID 19 pandemic. The government have released guidelines for safely re-opening these types of facilities which is available on the government website. - Ensure there is an appropriate risk assessment in place and review regularly

Finding 2

Signage should be provided for the outdoor fitness equipment in accordance with the requirements of BS EN 16630, key requirements of the sign include, but are not limited to, intended users, medical safety and emergency contact details - Provide appropriate signage

Finding 3

It is recommended that Adult Outdoor Fitness equipment is installed a minimum of 25m away from a children's playground or separated and screened to discourage access by younger children - Monitor use and review risk assessment regularly

Finding 4

There is work been undertaken to the surface around the fitness equipment - Complete the works

Finding 5

It is recommended that signage, with information including the site address, contact information for maintenance issues and emergency contact details are provided for the facility - Provide in accordance with the recommendations



i 8 - Low Risk

Item: Gate - Self Closing
Manufacturer: Owner/Operator
Surface Type: Grass
Item Quantity: 1
Equipment Compliance: N/A
Surface Area Compliance: N/A



Total Findings: 4

Finding 1

There are openings that are less than 12mm that could trap or crush fingers - Where possible a 12mm gap should be maintained on both sides or between the gate leaves

Finding 2

There are projecting nail ends present - Remove and provide more appropriate fixings if required

Finding 3

The gate is closing too quickly (less than 4 seconds) - Take corrective action to ensure that the gate closes in 4-8 seconds

Finding 4

There is or are fixings missing on the item - Replace all missing fixings

i 4 - Very Low Risk

Item: Fencing - Timber
Manufacturer: Owner/Operator
Surface Type: Grass
Item Quantity: 1
Equipment Compliance: N/A
Surface Area Compliance: N/A



Total Findings: 1

Finding 1

This item is satisfactory - no work required -



i 8 - Low Risk

Item: Multi Play (Junior)
Manufacturer: A.E.Evans
Surface Type: Loose Rubber Mulch
Item Quantity: 1
Equipment Compliance: Yes
Surface Area Compliance: Yes



Total Findings: 11

Finding 1

There is some tree debris on the surfacing - Remove and maintain

Finding 3

Parts of the timber are rough or splintered - Remove all rough or sharp edges

Finding 5

The timber has a number of splits/shakes or air cracks and this may affect the stability or allow water ingress which will accelerate the rotting process - Monitor to ensure the splits do not cross through fixing points of the structure and/or cause any instability

Finding 7

There is/are several inserts missing - Replace missing inserts

Finding 9

The side of the slide is damaged - Monitor for any further deterioration and repair as required

Finding 11

There is weed / vegetation growth on, between, or around the edges of the surfacing - Remove weed / vegetation growth

Finding 2

The paintwork on this item has been damaged or worn exposing the metal underneath which is rusting - Treat any rusting components and repaint

Finding 4

There is or are fixings missing on the item - Replace all missing fixings

Finding 6

There is some wear to the shackles - Monitor for any further deterioration and replace when 40% worn

Finding 8

There is surface corrosion present on the item - Consider treating the item

Finding 10

The ropes/nets are worn/damaged in places - Monitor for any further deterioration and repair or replace as required



 12 - Moderate Risk

Item: Basketball Post
Manufacturer: Not Identified
Surface Type: Bitmac
Item Quantity: 1
Equipment Compliance: Yes
Surface Area Compliance: N/A

Total Findings: 4



Finding 1

The net has been damaged - Replace the net

Finding 2

The paintwork on this item has been damaged or worn exposing the metal underneath which is rusting - Treat any rusting components and repaint

Finding 3

There are unsecured netball posts in the area - Remove from site

Finding 4

There are a number of loose posts around the fence - Monitor for any further deterioration and reset as required



i 8 - Low Risk

Item: 1 Bay 2 Seat (Cradle)
Manufacturer: Wicksteed Playgrounds
Surface Type: Wet Pour
Item Quantity: 1
Equipment Compliance: No
Surface Area Compliance: Yes

Total Findings: 8



Finding 1

There are trip hazards at the edges of the surface - Reinstate surrounding surface levels to remove the trip points

Finding 3

The safety surface under or around this unit has been damaged - Monitor for any further deterioration and repair as required

Finding 5

The chain openings are in excess of the 8.6mm as recommended by BS EN 1176 - Monitor - No remedial work recommended

Finding 7

The seat has minor damage or wear - Monitor for any further deterioration and replace as required

Finding 2

There are gaps opening between the surfacing and the edging surround or between the joints in the surfacing - Monitor for any further deterioration and repair as required

Finding 4

The safety surface around the area is beginning to wear - Monitor for any further deterioration and repair as required

Finding 6

There is some notable evidence of chain wear - Monitor for any further deterioration and replace when 40% worn

Finding 8

The paintwork on this item has been damaged or worn exposing the metal underneath which is rusting - Treat any rusting components and repaint



! 12 - Moderate Risk

Item: See Saw
Manufacturer: Wicksteed Playgrounds
Surface Type: Rubber Tiles
Item Quantity: 1
Equipment Compliance: Yes
Surface Area Compliance: Yes



Total Findings: 5

Finding 1

There are gaps opening in between the tiles - Monitor for any further deterioration and repair as required

Finding 2

There are gaps opening between the surfacing and the edging surround or between the joints in the surfacing - Monitor for any further deterioration and repair as required

Finding 3

The item has been damaged - Monitor for any further deterioration and replace as required

Finding 4

Parts of the steel on this item have corroded excessively and the metal has perforated in places - Ensure all affected areas are treated and repaired

Finding 5

The paintwork on this item has been damaged or worn exposing the metal underneath which is rusting - Treat any rusting components and repaint

i 6 - Low Risk

Item: Roundabout
Manufacturer: Wicksteed Playgrounds
Surface Type: Rubber Tiles
Item Quantity: 1
Equipment Compliance: Yes
Surface Area Compliance: Yes



Total Findings: 4

Finding 1

The safety surface around the area is beginning to wear - Monitor for any further deterioration and repair as required

Finding 2

There are gaps opening in between the tiles - Monitor for any further deterioration and repair as required

Finding 3

The paintwork on this item has been damaged or worn exposing the metal underneath which is rusting - Treat any rusting components and repaint

Finding 4

The item has been damaged - Monitor for any further deterioration and replace as required



i 8 - Low Risk

Item: Embankment Slide
Manufacturer: Not Identified
Surface Type: Rubber Tiles
Item Quantity: 1
Equipment Compliance: No
Surface Area Compliance: No



Total Findings: 11

Finding 1

The surface is lifting at the edges and creating trip points - Repair perimeter of surfacing to remove trip points

Finding 2

There are gaps opening in between the tiles - Monitor for any further deterioration and repair as required

Finding 3

The area around the item has eroded and may become slippery - Reinstate eroded area

Finding 4

The timber sleeper forms a hard object within the impact area of the equipment in contravention of the requirements of BS EN 1176 Part 1 - Monitor - No remedial work recommended

Finding 5

There is some evidence of rot in the timber sleeper - Monitor for any further deterioration and replace as required

Finding 6

The slide start section incline is not in the direction of travel; it should slope towards the direction of the sliding surface to meet the requirements of BS EN 1176 Part 3 - Monitor - No remedial work recommended

Finding 7

The safety surface under or around this unit has been damaged - Monitor for any further deterioration and repair as required

Finding 8

The paintwork on this item has been damaged or worn exposing the metal underneath which is rusting - Treat any rusting components and repaint

Finding 9

There is / are toggle entrapment/s present in contravention of the recommendations set out in BS EN 1176 Part 3 - Monitor - no remedial work recommended

Finding 10

The slide is predominately south facing and will catch the majority of the sun's heat during the day. Slide surfaces can become very warm during periods of sustained sunny weather - Monitor - No remedial work recommended

Finding 11

There are a number of dents in the slide surface - Monitor for any further deterioration and repair as required



i 6 - Low Risk

Item: Table Tennis
Manufacturer: HeBlad
Surface Type: Bonded Rubber Mulch
Item Quantity: 1
Equipment Compliance: N/A
Surface Area Compliance: N/A



Total Findings: 1

Finding 1

The item has been damaged - Monitor for any further deterioration and replace as required

i 8 - Low Risk

Item: 1 Bay 2 Seat (Flat)
Manufacturer: Wicksteed Playgrounds
Surface Type: Wet Pour
Item Quantity: 1
Equipment Compliance: No
Surface Area Compliance: Yes



Total Findings: 8

Finding 1

There is algae or moss on the surface of the equipment - Clean and treat appropriately

Finding 3

There is some wear to the shackles. - Monitor for any further deterioration and replace when 40% worn

Finding 5

The swing seat connectors are loose - Tighten to secure

Finding 7

There is some notable evidence of chain wear - Monitor for any further deterioration and replace when 40% worn

Finding 2

The safety surface around the area is beginning to wear - Monitor for any further deterioration and repair as required

Finding 4

The chain openings are in excess of the 8.6mm as recommended by BS EN 1176 - Monitor - No remedial work recommended

Finding 6

There is some graffiti present - Remove the graffiti

Finding 8

The bushes are showing signs of wear - Monitor for any further deterioration and replace as required



i 8 - Low Risk

Item: Skier
Manufacturer: Sunshine Gym
Surface Type: Grass Matrix Tiles
Item Quantity: 1
Equipment Compliance: Yes
Surface Area Compliance: Yes



Total Findings: 1

Finding 1

The bearing is not operating correctly - Replace the bearing as required

i 4 - Very Low Risk

Item: Double Air Walker
Manufacturer: Sunshine Gym
Surface Type: Grass Matrix Tiles
Item Quantity: 1
Equipment Compliance: Yes
Surface Area Compliance: Yes



Total Findings: 1

Finding 1

This item is satisfactory - no work required -



i 4 - Very Low Risk

Item: Arm and Pedal Bike
Manufacturer: Sunshine Gym
Surface Type: Grass Matrix Tiles
Item Quantity: 1
Equipment Compliance: Yes
Surface Area Compliance: Yes



Total Findings: 1

Finding 1

This item is satisfactory - no work required -

i 6 - Low Risk

Item: Leg Press
Manufacturer: Sunshine Gym
Surface Type: Grass Matrix Tiles
Item Quantity: 1
Equipment Compliance: Yes
Surface Area Compliance: Yes



Total Findings: 2

Finding 1

There are post end caps damaged on this item - Replace damaged post caps

Finding 2

The item is noisy in operation - Service the item



i 4 - Very Low Risk

Item: Double Fitness Station
Manufacturer: Sunshine Gym
Surface Type: Grass Matrix Tiles
Item Quantity: 1
Equipment Compliance: Yes
Surface Area Compliance: Yes



Total Findings: 1

Finding 1

This item is satisfactory - no work required -

i 8 - Low Risk

Item: Football Goal
Manufacturer: Not Identified
Surface Type: Grass
Item Quantity: 2
Equipment Compliance: N/A
Surface Area Compliance: N/A



Total Findings: 7

Finding 1

The area around the item has eroded and may become slippery - Reinstate eroded area

Finding 2

The paintwork on this item has been damaged or worn exposing the metal underneath which is rusting - Treat any rusting components and repaint

Finding 3

The goal posts are slightly loose in its foundations - Monitor for any further deterioration and repair as required

Finding 4

The goal nets are damaged - Repair or replace as required

Finding 5

There is algae or moss on the surface of the equipment - Clean and treat appropriately

Finding 6

NB: We have undertaken a maintenance inspection only of the football goal(s); full load testing falls outside the scope of our inspection. - Implement load testing as required

Finding 7

The goals are not secured in position - Refer to manufacturer recommendations and secure as required



Findings information

0 - Risk Assessment not Undertaken (Finding 1)

Item: Ancillary Items - Site General
Manufacturer: Owner/Operator

Risk Level: N - Risk Assessment not Undertaken
Surface: N/A



Finding: The site is accessible to the public during the COVID 19 pandemic. The government have released guidelines for safely re-opening these types of facilities which is available on the government website.

Action: Ensure there is an appropriate risk assessment in place and review regularly



i 4 - Very Low Risk (Finding 2)

Item: Ancillary Items - Site General
Manufacturer: Owner/Operator

Risk Level: V - Very Low Risk
Surface: N/A



Finding: Signage should be provided for the outdoor fitness equipment in accordance with the requirements of BS EN 16630, key requirements of the sign include, but are not limited to, intended users, medical safety and emergency contact details

Action: Provide appropriate signage



i 8 - Low Risk (Finding 3)

Item: Ancillary Items - Site General
Manufacturer: Owner/Operator

Risk Level: L - Low Risk
Surface: N/A



Finding: It is recommended that Adult Outdoor Fitness equipment is installed a minimum of 25m away from a children's playground or separated and screened to discourage access by younger children

Action: Monitor use and review risk assessment regularly

i 8 - Low Risk (Finding 4)

Item: Ancillary Items - Site General
Manufacturer: Owner/Operator

Risk Level: L - Low Risk
Surface: N/A



Finding: There is work been undertaken to the surface around the fitness equipment

Action: Complete the works



i 5 - Very Low Risk (Finding 5)

Item: Ancillary Items - Site General
Manufacturer: Owner/Operator

Risk Level: V - Very Low Risk
Surface: N/A



Finding: It is recommended that signage, with information including the site address, contact information for maintenance issues and emergency contact details are provided for the facility

Action: Provide in accordance with the recommendations

i 8 - Low Risk (Finding 1)

Item: Gates - Gate - Self Closing
Manufacturer: Owner/Operator

Risk Level: L - Low Risk
Surface: Grass



Finding: There are openings that are less than 12mm that could trap or crush fingers

Action: Where possible a 12mm gap should be maintained on both sides or between the gate leaves



i 8 - Low Risk (Finding 2)

Item: Gates - Gate - Self Closing
Manufacturer: Owner/Operator

Risk Level: L - Low Risk
Surface: Grass



Finding: There are projecting nail ends present

Action: Remove and provide more appropriate fixings if required

i 8 - Low Risk (Finding 3)

Item: Gates - Gate - Self Closing
Manufacturer: Owner/Operator

Risk Level: L - Low Risk
Surface: Grass



Finding: The gate is closing too quickly (less than 4 seconds)

Action: Take corrective action to ensure that the gate closes in 4-8 seconds



i 8 - Low Risk (Finding 4)

Item: Gates - Gate - Self Closing
Manufacturer: Owner/Operator

Risk Level: L - Low Risk
Surface: Grass



Finding: There is or are fixings missing on the item

Action: Replace all missing fixings



i 6 - Low Risk (Finding 1)

Item: Activity Equipment - Multi Play (Junior)
Manufacturer: A.E.Evans

Risk Level: L - Low Risk
Surface: Loose Rubber Mulch



Finding: There is some tree debris on the surfacing

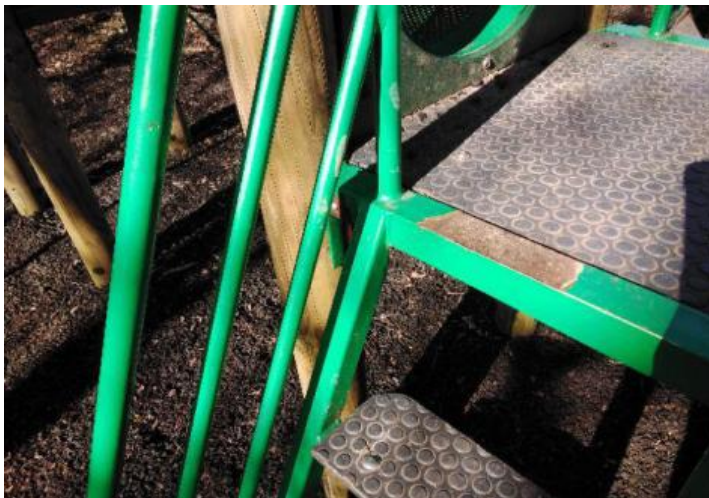
Action: Remove and maintain



i 6 - Low Risk (Finding 2)

Item: Activity Equipment - Multi Play (Junior)
Manufacturer: A.E.Evans

Risk Level: L - Low Risk
Surface: Loose Rubber Mulch



Finding: The paintwork on this item has been damaged or worn exposing the metal underneath which is rusting

Action: Treat any rusting components and repaint



i 6 - Low Risk (Finding 3)

Item: Activity Equipment - Multi Play (Junior)
Manufacturer: A.E.Evans

Risk Level: L - Low Risk
Surface: Loose Rubber Mulch



Finding: Parts of the timber are rough or splintered

Action: Remove all rough or sharp edges



i 8 - Low Risk (Finding 4)

Item: Activity Equipment - Multi Play (Junior)
Manufacturer: A.E.Evans

Risk Level: L - Low Risk
Surface: Loose Rubber Mulch



Finding: There is or are fixings missing on the item

Action: Replace all missing fixings



i 6 - Low Risk (Finding 5)

Item: Activity Equipment - Multi Play (Junior)
Manufacturer: A.E.Evans

Risk Level: L - Low Risk
Surface: Loose Rubber Mulch



Finding: The timber has a number of splits/shakes or air cracks and this may affect the stability or allow water ingress which will accelerate the rotting process

Action: Monitor to ensure the splits do not cross through fixing points of the structure and/or cause any instability



i 6 - Low Risk (Finding 6)

Item: Activity Equipment - Multi Play (Junior)
Manufacturer: A.E.Evans

Risk Level: L - Low Risk
Surface: Loose Rubber Mulch



Finding: There is some wear to the shackles

Action: Monitor for any further deterioration and replace when 40% worn

i 4 - Very Low Risk (Finding 7)

Item: Activity Equipment - Multi Play (Junior)
Manufacturer: A.E.Evans

Risk Level: V - Very Low Risk
Surface: Loose Rubber Mulch



Finding: There is/are several inserts missing

Action: Replace missing inserts



i 6 - Low Risk (Finding 8)

Item: Activity Equipment - Multi Play (Junior)
Manufacturer: A.E.Evans

Risk Level: L - Low Risk
Surface: Loose Rubber Mulch



Finding: There is surface corrosion present on the item

Action: Consider treating the item

i 6 - Low Risk (Finding 9)

Item: Activity Equipment - Multi Play (Junior)
Manufacturer: A.E.Evans

Risk Level: L - Low Risk
Surface: Loose Rubber Mulch



Finding: The side of the slide is damaged

Action: Monitor for any further deterioration and repair as required



i 6 - Low Risk (Finding 10)

Item: Activity Equipment - Multi Play (Junior)
Manufacturer: A.E.Evans

Risk Level: L - Low Risk
Surface: Loose Rubber Mulch



Finding: The ropes/nets are worn/damaged in places

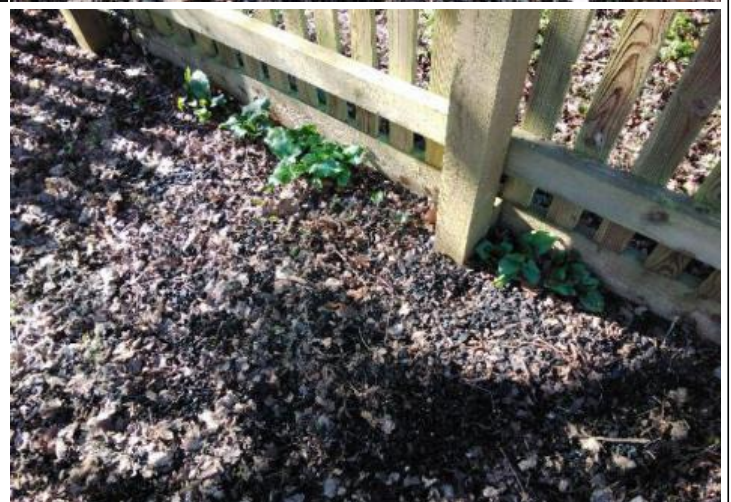
Action: Monitor for any further deterioration and repair or replace as required



i 6 - Low Risk (Finding 11)

Item: Activity Equipment - Multi Play (Junior)
Manufacturer: A.E.Evans

Risk Level: L - Low Risk
Surface: Loose Rubber Mulch



Finding: There is weed / vegetation growth on, between, or around the edges of the surfacing
Action: Remove weed / vegetation growth



i 8 - Low Risk (Finding 1)

Item: Multi Use Games Area - Basketball Post
Manufacturer: Not Identified

Risk Level: L - Low Risk
Surface: Bitmac



Finding: The net has been damaged

Action: Replace the net

i 6 - Low Risk (Finding 2)

Item: Multi Use Games Area - Basketball Post
Manufacturer: Not Identified

Risk Level: L - Low Risk
Surface: Bitmac



Finding: The paintwork on this item has been damaged or worn exposing the metal underneath which is rusting

Action: Treat any rusting components and repaint



! 12 - Moderate Risk (Finding 3)

Item: Multi Use Games Area - Basketball Post
Manufacturer: Not Identified

Risk Level: M - Moderate Risk
Surface: Bitmac



Finding: There are unsecured netball posts in the area

Action: Remove from site

i 6 - Low Risk (Finding 4)

Item: Multi Use Games Area - Basketball Post
Manufacturer: Not Identified

Risk Level: L - Low Risk
Surface: Bitmac



Finding: There are a number of loose posts around the fence

Action: Monitor for any further deterioration and reset as required



i 8 - Low Risk (Finding 1)

Item: Swings - 1 Bay 2 Seat (Cradle)
Manufacturer: Wicksteed Playgrounds

Risk Level: L - Low Risk
Surface: Wet Pour



Finding: There are trip hazards at the edges of the surface

Action: Reinststate surrounding surface levels to remove the trip points



i 6 - Low Risk (Finding 2)

Item: Swings - 1 Bay 2 Seat (Cradle)
Manufacturer: Wicksteed Playgrounds

Risk Level: L - Low Risk
Surface: Wet Pour



Finding: There are gaps opening between the surfacing and the edging surround or between the joints in the surfacing
Action: Monitor for any further deterioration and repair as required



i 4 - Very Low Risk (Finding 3)

Item: Swings - 1 Bay 2 Seat (Cradle)
Manufacturer: Wicksteed Playgrounds

Risk Level: V - Very Low Risk
Surface: Wet Pour



Finding: The safety surface under or around this unit has been damaged

Action: Monitor for any further deterioration and repair as required



i 6 - Low Risk (Finding 4)

Item: Swings - 1 Bay 2 Seat (Cradle)
Manufacturer: Wicksteed Playgrounds

Risk Level: L - Low Risk
Surface: Wet Pour



Finding: The safety surface around the area is beginning to wear

Action: Monitor for any further deterioration and repair as required



i 5 - Very Low Risk (Finding 5)

Item: Swings - 1 Bay 2 Seat (Cradle)
Manufacturer: Wicksteed Playgrounds

Risk Level: V - Very Low Risk
Surface: Wet Pour



Finding: The chain openings are in excess of the 8.6mm as recommended by BS EN 1176 **Action:** Monitor - No remedial work recommended



i 6 - Low Risk (Finding 6)

Item: Swings - 1 Bay 2 Seat (Cradle)
Manufacturer: Wicksteed Playgrounds

Risk Level: L - Low Risk
Surface: Wet Pour



Finding: There is some notable evidence of chain wear

Action: Monitor for any further deterioration and replace when 40% worn



i 6 - Low Risk (Finding 7)

Item: Swings - 1 Bay 2 Seat (Cradle)
Manufacturer: Wicksteed Playgrounds

Risk Level: L - Low Risk
Surface: Wet Pour



Finding: The seat has minor damage or wear

Action: Monitor for any further deterioration and replace as required



i 6 - Low Risk (Finding 8)

Item: Swings - 1 Bay 2 Seat (Cradle)
Manufacturer: Wicksteed Playgrounds

Risk Level: L - Low Risk
Surface: Wet Pour



Finding: The paintwork on this item has been damaged or worn exposing the metal underneath which is rusting

Action: Treat any rusting components and repaint



i 6 - Low Risk (Finding 1)

Item: Rocking Equipment - See Saw
Manufacturer: Wicksteed Playgrounds

Risk Level: L - Low Risk
Surface: Rubber Tiles



Finding: There are gaps opening in between the tiles

Action: Monitor for any further deterioration and repair as required

i 6 - Low Risk (Finding 2)

Item: Rocking Equipment - See Saw
Manufacturer: Wicksteed Playgrounds

Risk Level: L - Low Risk
Surface: Rubber Tiles



Finding: There are gaps opening between the surfacing and the edging surround or between the joints in the surfacing

Action: Monitor for any further deterioration and repair as required



i 6 - Low Risk (Finding 3)

Item: Rocking Equipment - See Saw
Manufacturer: Wicksteed Playgrounds

Risk Level: L - Low Risk
Surface: Rubber Tiles



Finding: The item has been damaged

Action: Monitor for any further deterioration and replace as required



 12 - Moderate Risk (Finding 4)

Item: Rocking Equipment - See Saw
Manufacturer: Wicksteed Playgrounds

Risk Level: M - Moderate Risk
Surface: Rubber Tiles



Finding: Parts of the steel on this item have corroded excessively and the metal has perforated in places

Action: Ensure all affected areas are treated and repaired



i 6 - Low Risk (Finding 5)

Item: Rocking Equipment - See Saw
Manufacturer: Wicksteed Playgrounds

Risk Level: L - Low Risk
Surface: Rubber Tiles



Finding: The paintwork on this item has been damaged or worn exposing the metal underneath which is rusting

Action: Treat any rusting components and repaint

i 6 - Low Risk (Finding 1)

Item: Rotor Play - Roundabout
Manufacturer: Wicksteed Playgrounds

Risk Level: L - Low Risk
Surface: Rubber Tiles



Finding: The safety surface around the area is beginning to wear

Action: Monitor for any further deterioration and repair as required



i 6 - Low Risk (Finding 2)

Item: Rotor Play - Roundabout
Manufacturer: Wicksteed Playgrounds

Risk Level: L - Low Risk
Surface: Rubber Tiles



Finding: There are gaps opening in between the tiles

Action: Monitor for any further deterioration and repair as required



i 6 - Low Risk (Finding 3)

Item: Rotor Play - Roundabout
Manufacturer: Wicksteed Playgrounds

Risk Level: L - Low Risk
Surface: Rubber Tiles



Finding: The paintwork on this item has been damaged or worn exposing the metal underneath which is rusting

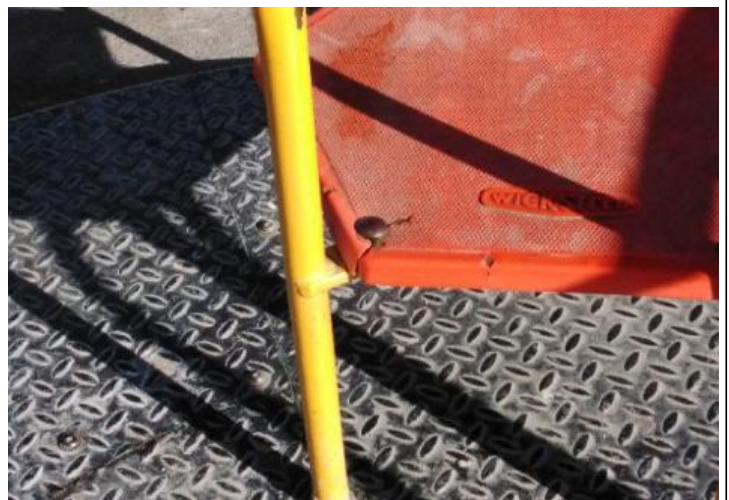
Action: Treat any rusting components and repaint



i 6 - Low Risk (Finding 4)

Item: Rotor Play - Roundabout
Manufacturer: Wicksteed Playgrounds

Risk Level: L - Low Risk
Surface: Rubber Tiles



Finding: The item has been damaged

Action: Monitor for any further deterioration and replace as required



i 8 - Low Risk (Finding 1)

Item: Other - Embankment Slide
Manufacturer: Not Identified

Risk Level: L - Low Risk
Surface: Rubber Tiles



Finding: The surface is lifting at the edges and creating trip points
Action: Repair perimeter of surfacing to remove trip points



i 6 - Low Risk (Finding 2)

Item: Other - Embankment Slide
Manufacturer: Not Identified

Risk Level: L - Low Risk
Surface: Rubber Tiles



Finding: There are gaps opening in between the tiles

Action: Monitor for any further deterioration and repair as required

i 8 - Low Risk (Finding 3)

Item: Other - Embankment Slide
Manufacturer: Not Identified

Risk Level: L - Low Risk
Surface: Rubber Tiles



Finding: The area around the item has eroded and may become slippery

Action: Reinstate eroded area



i 5 - Very Low Risk (Finding 4)

Item: Other - Embankment Slide
Manufacturer: Not Identified

Risk Level: V - Very Low Risk
Surface: Rubber Tiles



Finding: The timber sleeper forms a hard object within the impact area of the equipment in contravention of the requirements of BS EN 1176 Part 1

Action: Monitor - No remedial work recommended

i 6 - Low Risk (Finding 5)

Item: Other - Embankment Slide
Manufacturer: Not Identified

Risk Level: L - Low Risk
Surface: Rubber Tiles



Finding: There is some evidence of rot in the timber sleeper

Action: Monitor for any further deterioration and replace as required



i 4 - Very Low Risk (Finding 6)

Item: Other - Embankment Slide
Manufacturer: Not Identified

Risk Level: V - Very Low Risk
Surface: Rubber Tiles



Finding: The slide start section incline is not in the direction of travel; it should slope towards the direction of the sliding surface to meet the requirements of BS EN 1176 Part 3

Action: Monitor - No remedial work recommended



i 4 - Very Low Risk (Finding 7)

Item: Other - Embankment Slide
Manufacturer: Not Identified

Risk Level: V - Very Low Risk
Surface: Rubber Tiles



Finding: The safety surface under or around this unit has been damaged

Action: Monitor for any further deterioration and repair as required



i 6 - Low Risk (Finding 8)

Item: Other - Embankment Slide
Manufacturer: Not Identified

Risk Level: L - Low Risk
Surface: Rubber Tiles



Finding: The paintwork on this item has been damaged or worn exposing the metal underneath which is rusting

Action: Treat any rusting components and repaint



i 5 - Very Low Risk (Finding 9)

Item: Other - Embankment Slide
Manufacturer: Not Identified

Risk Level: V - Very Low Risk
Surface: Rubber Tiles



Finding: There is / are toggle entrapment/s present in contravention of the recommendations set out in BS EN 1176 Part 3

Action: Monitor - no remedial work recommended

i 6 - Low Risk (Finding 10)

Item: Other - Embankment Slide
Manufacturer: Not Identified

Risk Level: L - Low Risk
Surface: Rubber Tiles



Finding: The slide is predominately south facing and will catch the majority of the sun's heat during the day. Slide surfaces can become very warm during periods of sustained sunny weather

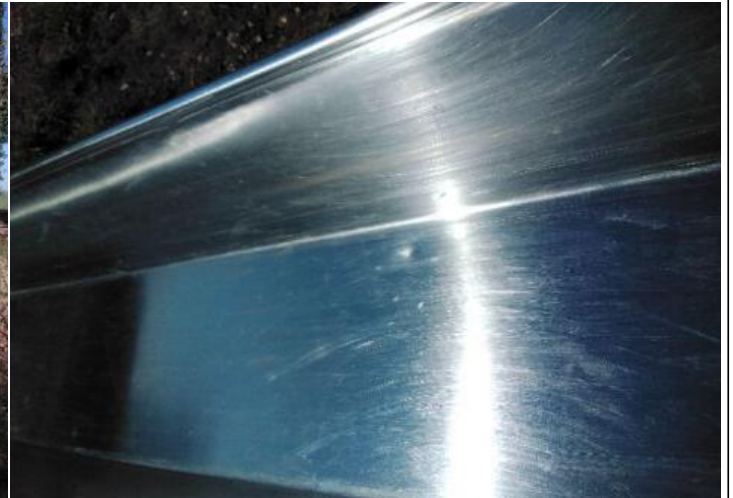
Action: Monitor - No remedial work recommended



i 4 - Very Low Risk (Finding 11)

Item: Other - Embankment Slide
Manufacturer: Not Identified

Risk Level: V - Very Low Risk
Surface: Rubber Tiles



Finding: There are a number of dents in the slide surface

Action: Monitor for any further deterioration and repair as required

i 6 - Low Risk (Finding 1)

Item: Other - Table Tennis
Manufacturer: HeBlad

Risk Level: L - Low Risk
Surface: Bonded Rubber Mulch



Finding: The item has been damaged

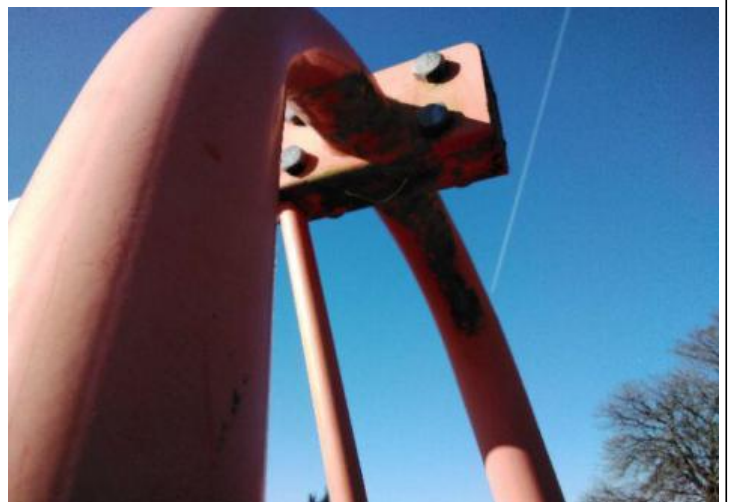
Action: Monitor for any further deterioration and replace as required



i 8 - Low Risk (Finding 1)

Item: Swings - 1 Bay 2 Seat (Flat)
Manufacturer: Wicksteed Playgrounds

Risk Level: L - Low Risk
Surface: Wet Pour



Finding: There is algae or moss on the surface of the equipment

Action: Clean and treat appropriately



i 6 - Low Risk (Finding 2)

Item: Swings - 1 Bay 2 Seat (Flat)
Manufacturer: Wicksteed Playgrounds

Risk Level: L - Low Risk
Surface: Wet Pour



Finding: The safety surface around the area is beginning to wear

Action: Monitor for any further deterioration and repair as required



i 6 - Low Risk (Finding 3)

Item: Swings - 1 Bay 2 Seat (Flat)
Manufacturer: Wicksteed Playgrounds

Risk Level: L - Low Risk
Surface: Wet Pour



Finding: There is some wear to the shackles.

Action: Monitor for any further deterioration and replace when 40% worn



i 5 - Very Low Risk (Finding 4)

Item: Swings - 1 Bay 2 Seat (Flat)
Manufacturer: Wicksteed Playgrounds

Risk Level: V - Very Low Risk
Surface: Wet Pour



Finding: The chain openings are in excess of the 8.6mm as recommended by BS EN 1176 **Action:** Monitor - No remedial work recommended



i 6 - Low Risk (Finding 5)

Item: Swings - 1 Bay 2 Seat (Flat)
Manufacturer: Wicksteed Playgrounds

Risk Level: L - Low Risk
Surface: Wet Pour



Finding: The swing seat connectors are loose

Action: Tighten to secure

i 0 - Risk Assessment not Undertaken (Finding 6)

Item: Swings - 1 Bay 2 Seat (Flat)
Manufacturer: Wicksteed Playgrounds

Risk Level: N - Risk Assessment not Undertaken
Surface: Wet Pour



Finding: There is some graffiti present

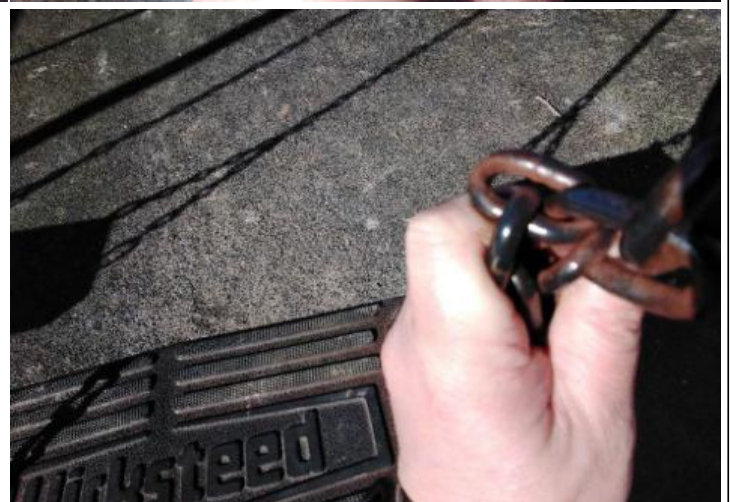
Action: Remove the graffiti



i 6 - Low Risk (Finding 7)

Item: Swings - 1 Bay 2 Seat (Flat)
Manufacturer: Wicksteed Playgrounds

Risk Level: L - Low Risk
Surface: Wet Pour



Finding: There is some notable evidence of chain wear

Action: Monitor for any further deterioration and replace when 40% worn



i 4 - Very Low Risk (Finding 8)

Item: Swings - 1 Bay 2 Seat (Flat)
Manufacturer: Wicksteed Playgrounds

Risk Level: V - Very Low Risk
Surface: Wet Pour



Finding: The bushes are showing signs of wear

Action: Monitor for any further deterioration and replace as required



i 8 - Low Risk (Finding 1)

Item: Outdoor Fitness Equipment - Skier
Manufacturer: Sunshine Gym

Risk Level: L - Low Risk
Surface: Grass Matrix Tiles



Finding: The bearing is not operating correctly

Action: Replace the bearing as required

i 6 - Low Risk (Finding 1)

Item: Outdoor Fitness Equipment - Leg Press
Manufacturer: Sunshine Gym

Risk Level: L - Low Risk
Surface: Grass Matrix Tiles



Finding: There are post end caps damaged on this item

Action: Replace damaged post caps



i 4 - Very Low Risk (Finding 2)

Item: Outdoor Fitness Equipment - Leg Press
Manufacturer: Sunshine Gym

Risk Level: V - Very Low Risk
Surface: Grass Matrix Tiles



Finding: The item is noisy in operation

Action: Service the item



i 8 - Low Risk (Finding 1)

Item: Multi Use Games Area - Football Goal
Manufacturer: Not Identified

Risk Level: L - Low Risk
Surface: Grass



Finding: The area around the item has eroded and may become slippery

Action: Reinststate eroded area



i 6 - Low Risk (Finding 2)

Item: Multi Use Games Area - Football Goal
Manufacturer: Not Identified

Risk Level: L - Low Risk
Surface: Grass



Finding: The paintwork on this item has been damaged or worn exposing the metal underneath which is rusting

Action: Treat any rusting components and repaint



i 6 - Low Risk (Finding 3)

Item: Multi Use Games Area - Football Goal
Manufacturer: Not Identified

Risk Level: L - Low Risk
Surface: Grass



Finding: The goal posts are slightly loose in its foundations

Action: Monitor for any further deterioration and repair as required



i 6 - Low Risk (Finding 4)

Item: Multi Use Games Area - Football Goal
Manufacturer: Not Identified

Risk Level: L - Low Risk
Surface: Grass



Finding: The goal nets are damaged

Action: Repair or replace as required



i 8 - Low Risk (Finding 5)

Item: Multi Use Games Area - Football Goal
Manufacturer: Not Identified

Risk Level: L - Low Risk
Surface: Grass



Finding: There is algae or moss on the surface of the equipment

Action: Clean and treat appropriately



i 4 - Very Low Risk (Finding 6)

Item: Multi Use Games Area - Football Goal
Manufacturer: Not Identified
Risk Level: V - Very Low Risk
Surface: Grass



Finding: NB: We have undertaken a maintenance inspection only of the football goal(s); full load testing falls outside the scope of our inspection.

Action: Implement load testing as required

i 8 - Low Risk (Finding 7)

Item: Multi Use Games Area - Football Goal
Manufacturer: Not Identified
Risk Level: L - Low Risk
Surface: Grass



Finding: The goals are not secured in position

Action: Refer to manufacturer recommendations and secure as required